

Monday Morning Mess

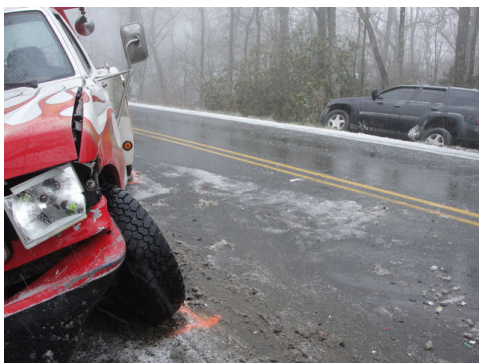
Written by Steve Frank
Monday, 28 March 2011 08:52

Travel around the High Country was a morning nightmare, after snowfall began to cover roadways. Wrecks busied emergency serves across the area, with several accidents involving injuries. One on US 221 in the Sandy Flats area involved three vehicles—one a wrecker—

and blocked the highway for some time just east of Blowing Rock. The injured refused treatment in that.

Another injury wreck occurred on Howards Creek at Grady Winkler Road, one person suffering a leg injury, a woman also trapped in her car as it skidded to the side of the road.

There were a number of non-injury wrecks, including a two-vehicle collision on US 221 south of Linville that became a three-vehicle wreck when another skidded onto the scene.



Monday Morning Mess

Written by Steve Frank
Monday, 28 March 2011 08:52

